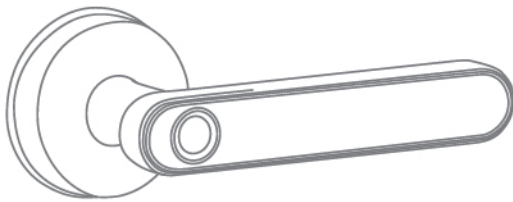


Operating Instructions For Indoor Intelligent Lock

1. Check Foundation Accessories

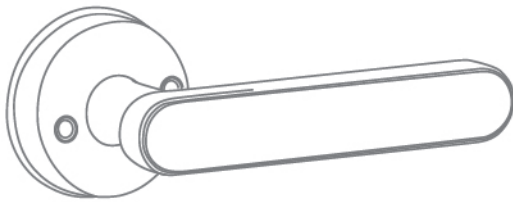
After unpacking the product, check the following accessories .



Front Handle x1



Key X2



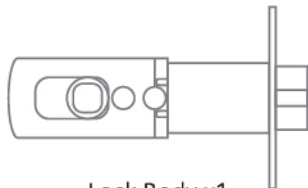
Rear Handle x1



Lock Screw X2



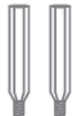
Batteries X4
(Not included)



Lock Body x1



Long Screw X2



Stud X2



Latch Piece x1



Hexagon Wrench X1



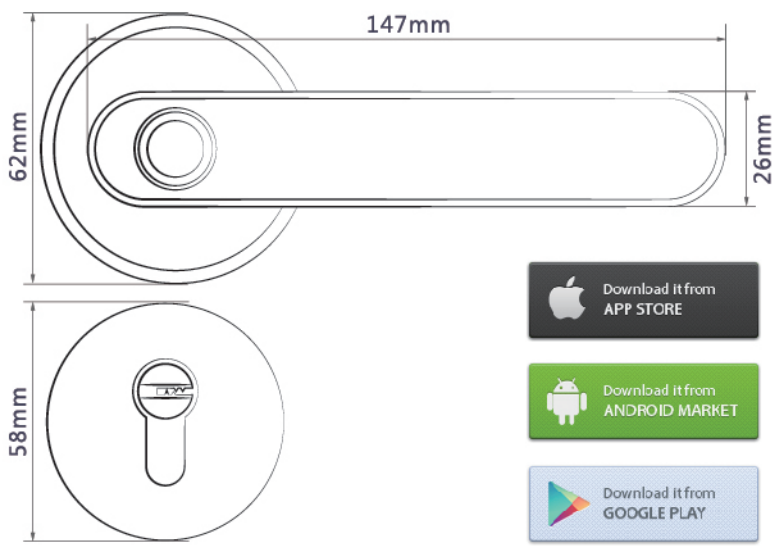
Pin X1



Latch Cover X1



Hollow Square Steel X1



How to open the door : APP, Fingerprint, Password, IC card, Key

Number of fingerprints : 100pcs

Number of passwords : APP sends password (Unlimited)
Custom password(150 Groups)

Product material : Zinc alloy lock body, Tempered glass touch screen

Power Supply : Four alkaline batteries

Applicable lock body : Single tongue lock body
Double tongue lock body (standard)

Passage Mode : Door lock status, easy to switch

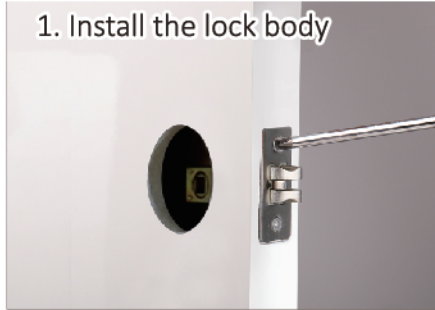
Low battery reminder : Low battery indicator, red light flashing reminder,
low voltage reminder

Patented design : Independent design, industrial products made into handicrafts.

Product color : Black, brushed nickel, gold; support color customization

2. Installation Step Diagram

1. Install the lock body



Put the lock body into the corresponding slot and fix the upper and lower screws.

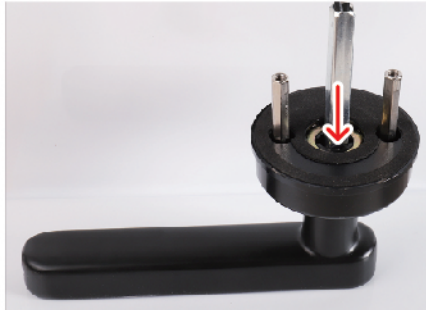
2. Install front handle



Secure the two nut posts to the front handle.



Put the power cord on the front handle through the square steel bar.

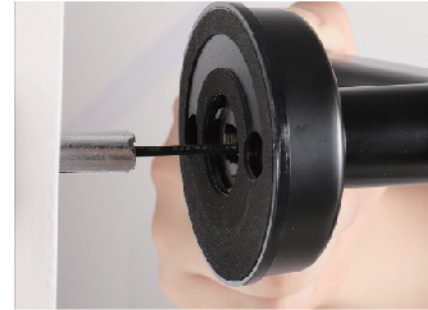


Note: Square steel needs to be placed at the bottom.

3. Install the rear handle



Loosen the screws of the rear cover plate with a hexagon wrench and remove the rear cover plate.



Put one end of the power cord through the center hole of the rear handle.

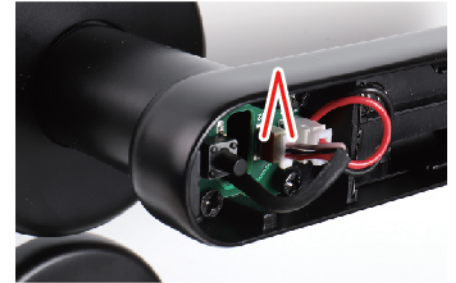
4. Install the battery



Plug in the power cord and install the battery.



Align the square steel bar, tighten it with long screws, and fix the rear handle.



Note: when connecting the power line, the red mark on the terminal block is inserted in the same direction as the port red mark.



The square steel passes through the square steel hole of the lock body, secure the handle.



Fasten the rear cover plate and fix the screws of the rear cover plate.



5. Complete and test

After installation, check the door opening.

APP Introduction And Acquisition

"Tuya smart APP" is a smart device management APP provided by Tuya to consumers. Through "Tuya smart APP", you can easily configure and control the whole house smart products you buy, configure your favorite scenes and automation schemes, share your smart devices with family and friends, and enjoy the fun of whole house smart.

Tuya provides OEM APP solutions for manufacturers using Tuya smart APP as a template, customize various function configurations, reduce development resource investment, and quickly put products into the market.

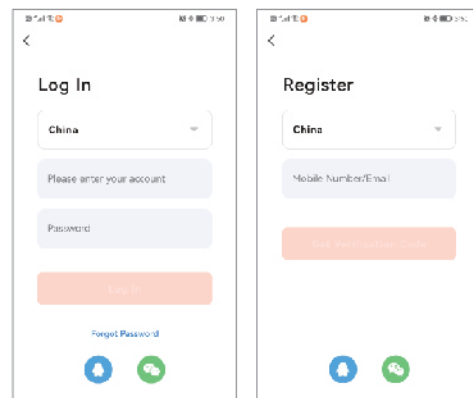
APP Acquisition: Search "Tuya smart" in the application market or scan QR code for download.

This document takes Smart Life APP as an example to explain in detail the functions of APP & door lock panel.

APP Registration and Login

APP registration:

We can register and log in through email.

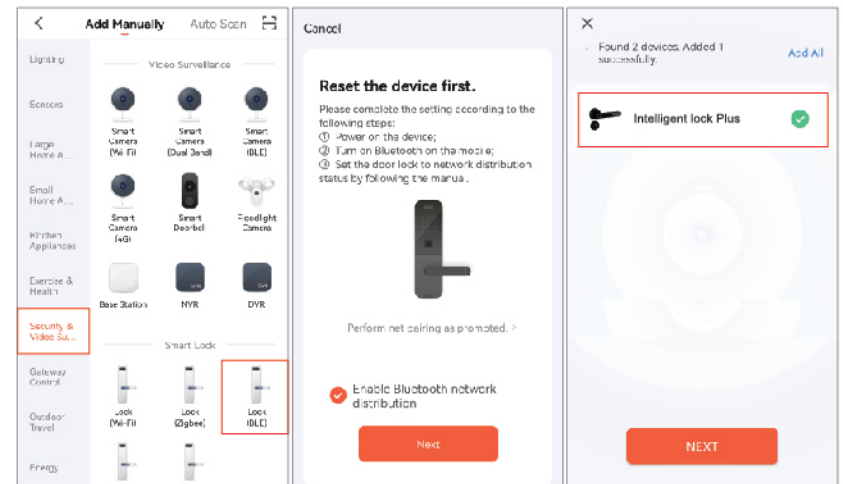


Click "create new account" to enter the account registration page.

To get verification code in email and set the password.

If you have an existing account, you can click "log in with existing account." The login method support by password, and verification code login.

Add Bluetooth Lock



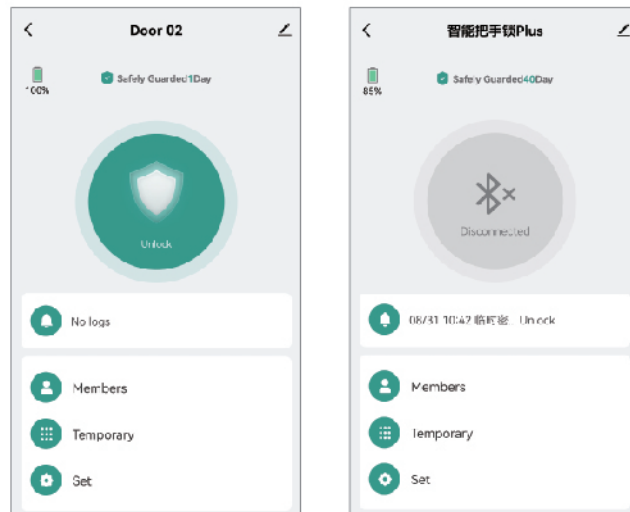
1. Click the "+" icon in the upper right corner of the app homepage.
2. Click the category of "security sensor" on the left.
3. Find the door lock (Bluetooth).
4. Press the "8" + "#" button on the touch panel in the exit state.
5. Waiting for the device to connect.

Bluetooth door lock panel - home

1. The lower side of the home page contains unlocking log, members, temporary password, and settings. On the upper side of the panel displays the current power status of the door lock, the opening and closing status of the door, etc.

2. The Bluetooth connection will be displayed in the center of the home page.

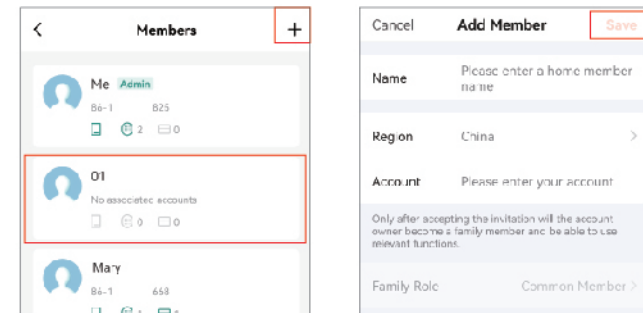
If it is connected, you can "long press to unlock" to directly open the door lock (please ensure that the Bluetooth of the mobile phone is turned on and the mobile phone is within a reasonable distance from the lock. It is recommended to operate within 5m). If Bluetooth is not connected, it will be displayed and the Bluetooth door lock cannot be opened directly through APP.



Member management - add members

1. Click the member on the main page to enter the "member unlocking page." You can view the member list.

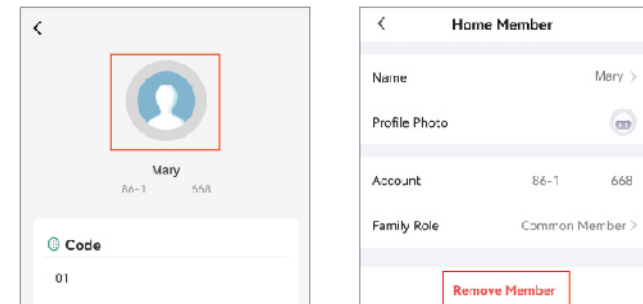
2. Add a member: click "+" to enter the add member page. Enter the member information account (members need to install Tuya APP registration) and save the information.



Member management - remove members

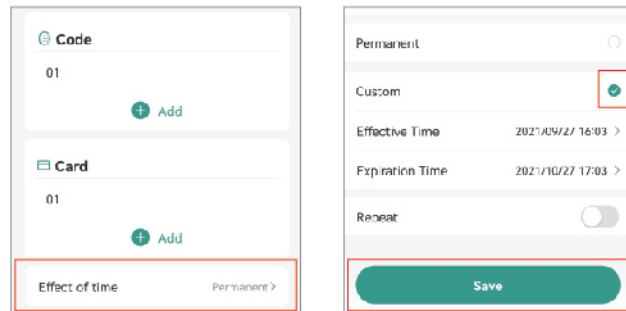
1. Click member to enter the single member management page.

2. Remove member: select the member to be removed, click the avatar to remove the member.



Member management - member validity

1. On the single member management page, select effective (effective is permanent by default).
2. Select custom, set the "Effect of time" of the member's use of equipment and save it.

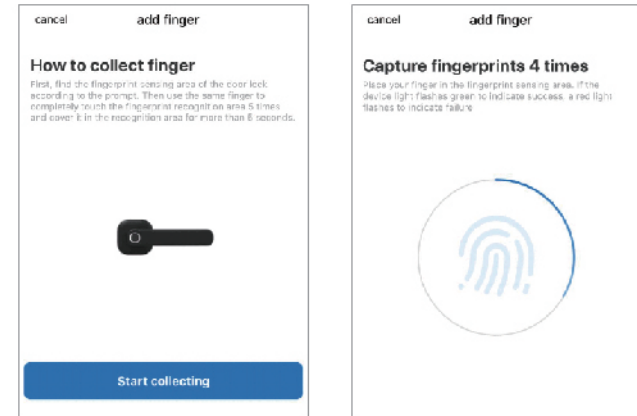


Add Fingerprint

Home settings entry - before selecting fingerprint management collection, select the user corresponding to the fingerprint to be added.

Click "start collection" to enter the fingerprint collection interface. Each fingerprint collection needs to enter multiple fingerprints.

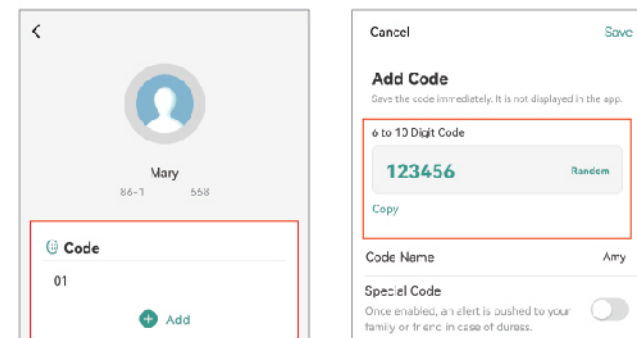
Through the Bluetooth connection of app, the administrator can collect fingerprints for himself or other family members.



Add password

1. Enter the single member management page, select the password area and click "+" to add.
2. Enter a user-defined password or generate it randomly, set the password name, and save the password.

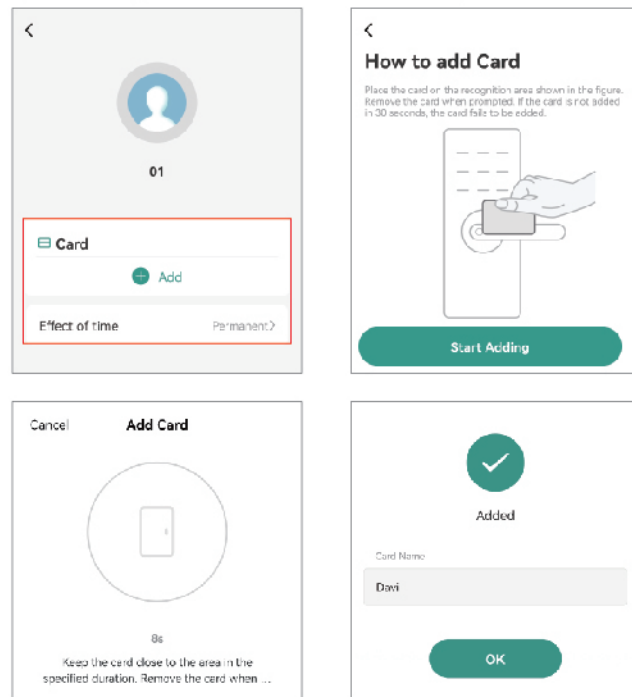
Note: after the Bluetooth distribution network, if the password function is used, you must press "#" to activate the keyboard before using it.



Add Card

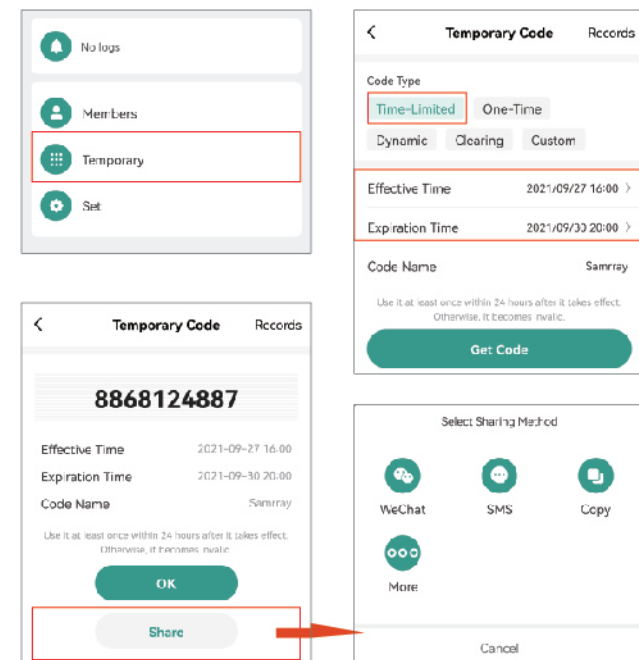
1. Enter the single member management page, select the card area and click "+" to add.
2. Click "start adding". During adding, place the card in the sensing area twice until the green light flashes twice and a long sound is heard. It indicates that the addition is successful. If the red light flashes, the addition fails.
3. After adding successfully, name the card, and click finish.

Note: after the Bluetooth network is distributed, if the card function is used, you must press "#" to activate the keyboard before using it.



Temporary password - time limited password

1. Click "temporary password" on the main page to enter the temporary password interface.
 2. Select "Time-Limited" to set the effective time to the expiration time according to user requirements.
 3. Fill in the password name. Click to get the password.
 4. The system automatically generates a temporary password.
- Click finish or share directly with users.
(The password shall be used at least once within 24 hours after it takes effect, otherwise it will become invalid)



Temporary password - single password

Select "One-Time" to fill in the password name.

Click to get the password.

(A single password is valid for 6 hours and can only be used once before it expires).

Temporary password - dynamic password

Select "Dynamic" to fill in the password name.

Click to get the password.

(The dynamic password is valid for 5 minutes and can be used multiple times before expiration).

The image shows two mobile app screenshots of the 'Temporary Code' screen. Both screens have a back arrow, 'Temporary Code' title, and 'Records' link. Under 'Code Type', there are three options: 'Time-Limited', 'One-Time', and 'Dynamic'. In the first screenshot, 'One-Time' is selected and highlighted with a red box. In the second screenshot, 'Dynamic' is selected and highlighted with a red box. Below the 'Code Type' section, there is a 'Code Name' field with a placeholder 'One' in the first screenshot and a large empty text area in the second. At the bottom, there is a 'Get Code' button. A small note at the bottom of each screen states: 'Validity period: 6 hours. It can be used only once before it expires.' for the first, and 'Validity period: 5 minutes. It can be used multiple times before it expires.' for the second.

Temporary password - clear time limited password

Select "Clearing" to clear all time limited passwords or clear a single time limited password. Click to get the password.

(the number is valid for 24 hours. After entering it on the lock, the selected time limited password will be cleared.)

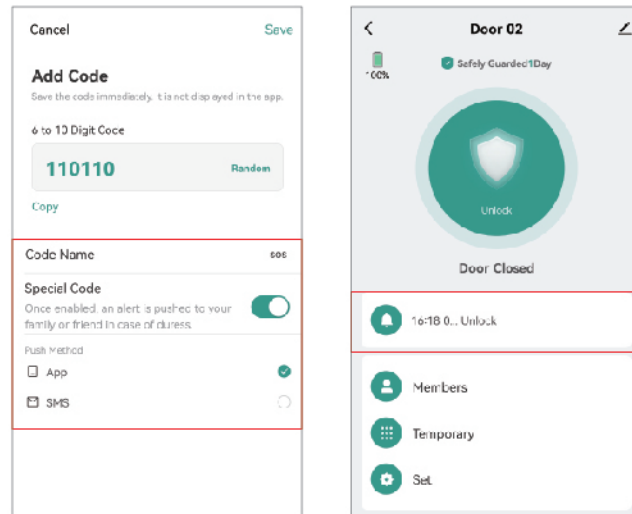
Temporary password - Custom password

Select "custom" to enter a custom password or generate it randomly, set the effective time to the expiration time, set the code name, and click to get code.

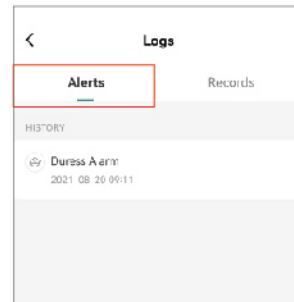
The image shows two mobile app screenshots of the 'Temporary Code' screen. Both screens have a back arrow, 'Temporary Code' title, and 'Records' link. Under 'Code Type', there are three options: 'Time-Limited', 'One-Time', and 'Dynamic'. In the first screenshot, 'Clearing' is selected and highlighted with a red box. In the second screenshot, 'Custom' is selected and highlighted with a red box. Below the 'Code Type' section, there is a 'Clearing Type' section with a 'Clear All >' link in the first screenshot, and a 'Code Name' field with a placeholder 'Please enter (optional)' in the second. At the bottom, there is a 'Get Code' button. A small note at the bottom of each screen states: 'Validity period: 24 hours. Once entered on the lock, all used time-limited codes are cleared.' for the first, and 'Validity period: 24 hours. Once entered on the lock, all used time-limited codes are cleared.' for the second.

Alarm information

1. When adding a password to a single user, select to open a special password, enter a user-defined password or use a randomly generated password. Set reminder method APP notification.
2. When the user opens the door with a special password, the system can receive the information prompt of hijacking alarm.



3. Select the doorbell icon in the APP main interface, enter the door opening log interface, and select the "Alerts".



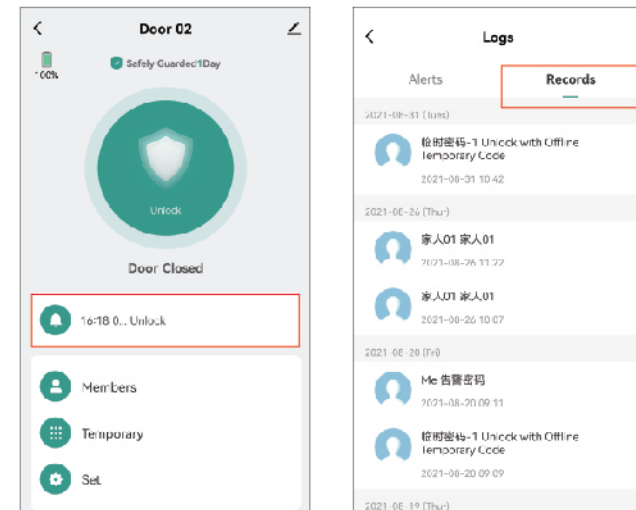
Door opening record query

Select the doorbell icon in the APP main interface to enter the door opening log interface and select the door opening record.

The door opening records are arranged in reverse order.

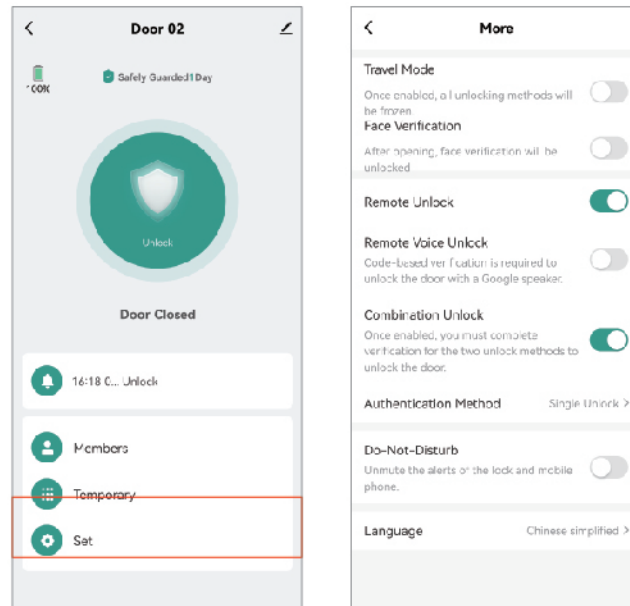
The unlocking ID associated with the user name will directly display the corresponding user name, and the unlocking id not associated with the name will display the specific unlocking ID.

When the door lock is connected with the mobile phone Bluetooth, the door opening record will be displayed to the app in real time. Otherwise, the record will be cached in the local door lock, waiting for the next time the lock is connected with the Bluetooth and open the door for supplementary transmission.



Door lock setting

1. Select "Set" in the main interface to enter the door lock setting interface. Set different functions of the lock according to user requirements.



Restore factory settings

Click the icon in the upper right corner of the main interface. After entering the interface, pull down to find "remove device", and select "unbind and clear data"

1. When the mobile phone APP is in Bluetooth connection status with the lock, use the remove device setting operation. All local door opening modes of the door lock will be deleted, and the door lock will be restored to the default state when it was just delivered from the factory. Other users can add the lock again through APP.
2. When the mobile phone is not Bluetooth connected with the door lock, restore the factory setting of the lock. The door opening mode on the lock remains unaffected. Other users can repair the information with the lock through the APP, and the original unlocking method of the paired rear lock will fail.
3. Press and hold the rear panel setting button for 5 seconds to restore the factory setting.

Normally Open Set / Cancel Normally Open

Normally open setting: Briefly press the reset button setting button to set the normally open function, and the user can directly press the handle to open the door.

Cancel normally open: Briefly press the setting button on the reset button to cancel the normally open function.

