

Operating Instructions For Indoor Intelligent Lock



APP Introduction And Acquisition

"Tuya smart APP" is a smart device management APP provided by Tuya to end consumers. Through "Tuya smart APP", you can easily configure and control the whole house smart products you buy, configure your favorite scenes and automation schemes, share your smart devices with family and friends, and enjoy the fun of whole house smart.

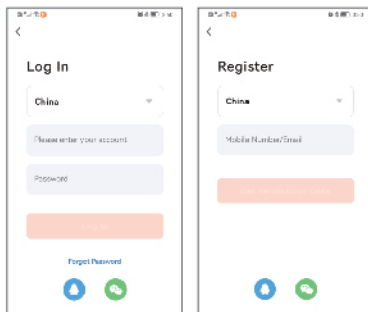
Tuya provides OEM APP solutions for manufacturers, that is, using Tuya smart APP as a template, customize various function configurations, reduce development resource investment, and quickly put products into the market.

APP acquisition: Search "Tuya smart" in the application market or scan QR code for download.

This document takes Smart Life APP as an example to explain in detail the functions of APP & door lock panel.

APP Registration and login

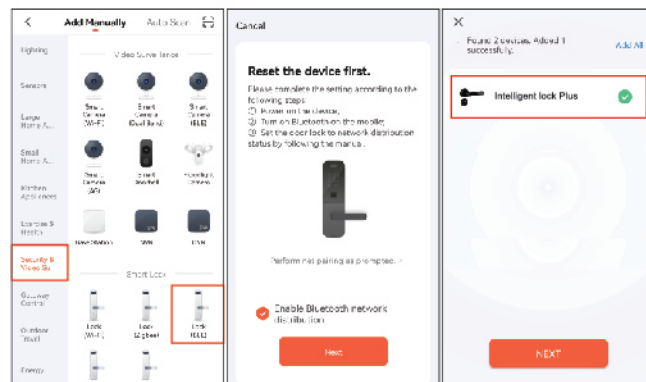
APP registration: if there is no APP account, choose to register or log in through SMS verification code.



Click "create new account" to enter the account registration page. Follow the prompts to obtain the SMS verification code and set the password.

If you have an existing account, you can click "log in with existing account" to log in to the APP. The login method supports password, verification code and social account login.

Add Bluetooth door lock

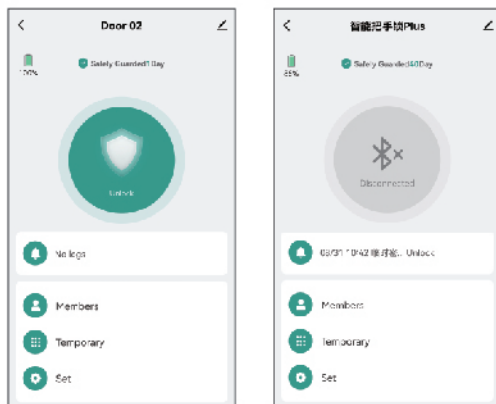


1. Click the "+" icon in the upper right corner of the APP home page
2. Click the "security sensing" category on the left
3. Locate the door lock (Bluetooth)
4. Touch the keyboard to wake up in the exit state
5. In the third interface, wait for the device to connect

Bluetooth door lock panel - home

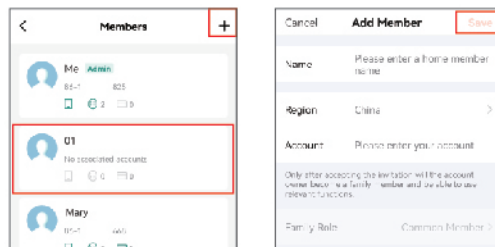
1. The lower side of the home page contains unlocking log, members, temporary password and settings; The on the upper side of the panel displays the current power status of the door lock, the opening and closing status of the door, etc.

2. The Bluetooth connection will be displayed in the center of the home page. The Bluetooth connection will be displayed in the center of the home page. If it is connected, you can click "long press to unlock" to directly open the door lock (please ensure that the Bluetooth of the mobile phone is turned on and the mobile phone is within a reasonable distance from the door lock. It is recommended to operate within 5m); If Bluetooth is not connected, "Bluetooth is not connected" will be displayed, and the Bluetooth door lock cannot be opened directly through APP.



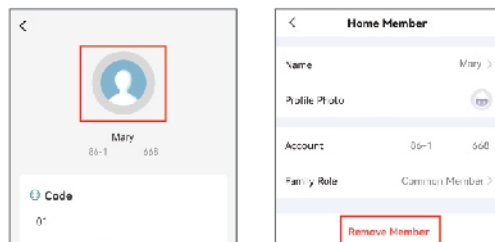
Member management - add members

1. Click the member on the main page to enter the member unlocking page. You can view the member list.
2. Add a member: click "+" to enter the add member page, enter the member information account (members need to install graffiti APP registration) and save the information.



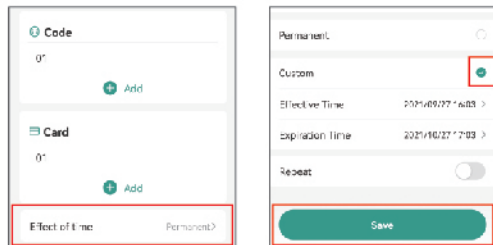
Member management - remove members

1. Click member to enter the single member management page.
2. Remove member: select the member to be removed, click the avatar to remove the member.



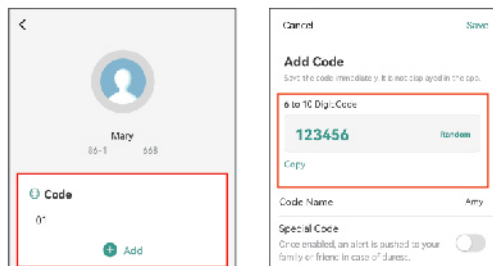
Member management - member validity

1. On the single member management page, select effective (effective is permanent by default)
2. Select custom, set the validity period of the member's use of equipment and save it.



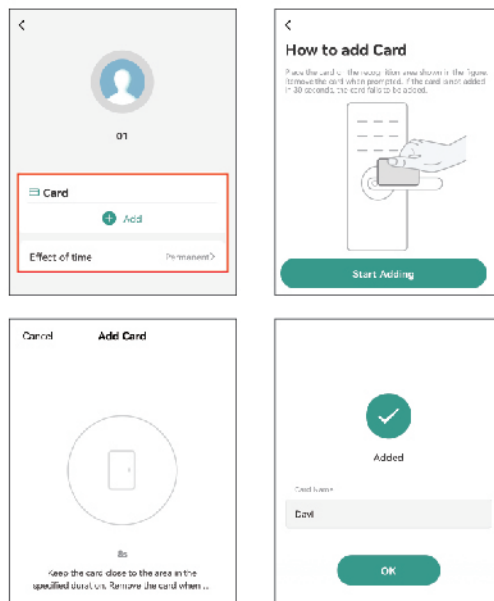
Add password

1. Enter the single member management page, select the password area and click "+" to add.
2. Enter a user-defined password or generate it randomly, set the password name and save the password.



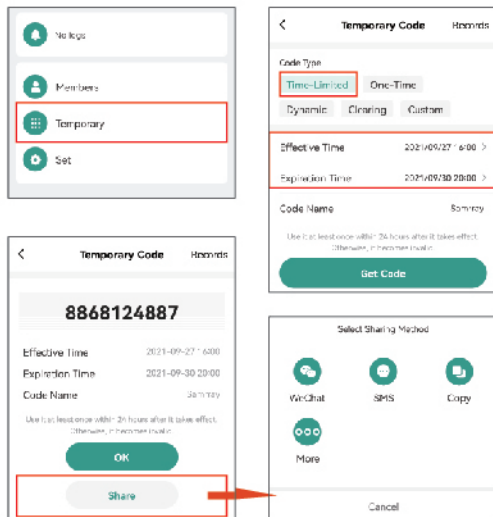
Add Card

1. Enter the single member management page, select the card area and click "+" to add.
2. Click "start adding". When adding, place the card in the sensing area twice until the green light flashes twice and a long sound is heard, it indicates that the addition is successful. If the red light flashes, the addition fails.
3. After adding successfully, name the card and click finish.



Temporary password - time limited password

1. Click "temporary password" on the main page to enter the temporary password interface.
2. Select "limited time" to set the effective time to the expiration time according to user requirements.
3. Fill in the password name. Click to get the password.
4. The system automatically generates a temporary password. Click finish or share directly with users.
(the password shall be used at least once within 24 hours after it takes effect, otherwise it will become invalid)



Temporary password - single password

Select "single time" to fill in the password name.

Click to get the password.

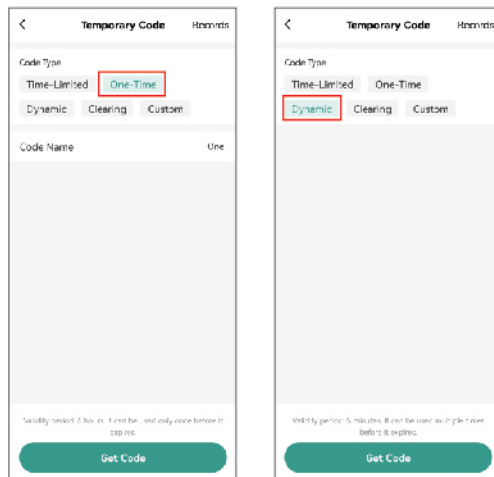
(a single password is valid for 6 hours and can only be used once before it expires)

Temporary password - dynamic password

Select "dynamic" to fill in the password name.

Click to get the password.

(the dynamic password is valid for 5 minutes and can be used multiple times before expiration)



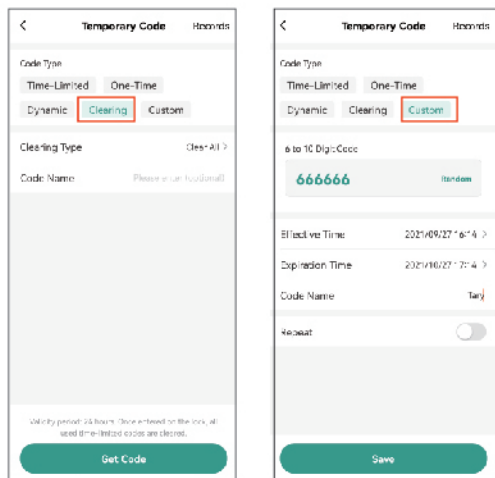
Temporary password - clear time limited password

Select "clear" to clear all time limited passwords or clear a single time limited password. Click to get the password.

(the number is valid for 24 hours. After entering it on the lock, the selected time limited password will be cleared.)

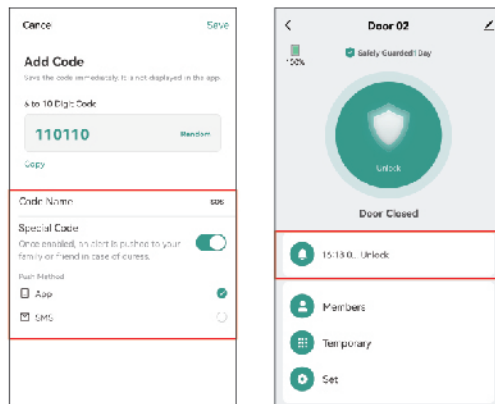
Temporary password - Custom password

Select "custom" to enter a custom password or generate it randomly, set the effective time to the expiration time, set the password name, and click to obtain the password.

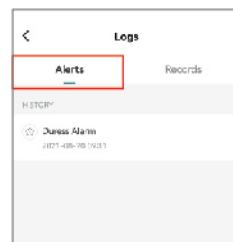


Alarm information

1. When adding a password to a single user, select to open a special password, enter a user-defined password or use a randomly generated password. Set reminder method app notification.
2. When the user opens the door with a special password, the system can receive the information prompt of hijacking alarm.



3. Select the doorbell icon in the APP main interface, enter the door opening log interface, and select the alarm information.



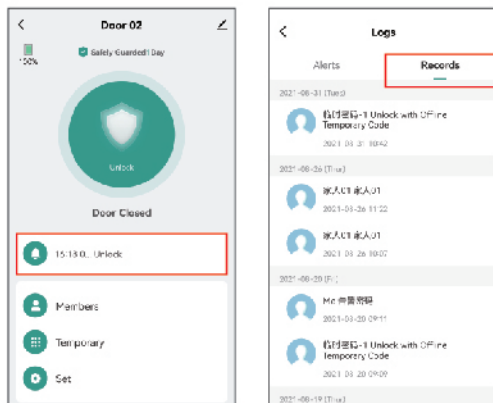
Door opening record query

Select the doorbell icon in the APP main interface to enter the door opening log interface and select the door opening record.

The door opening records are arranged in reverse order.

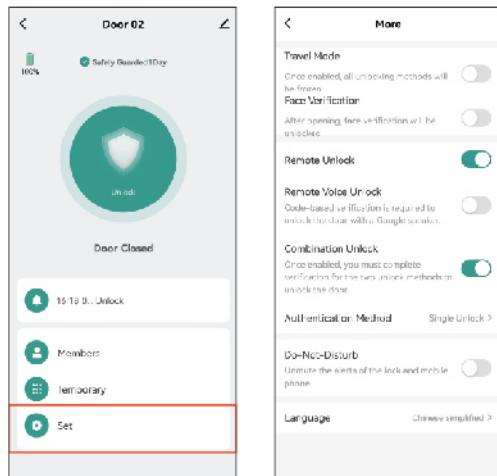
The unlocking ID associated with the user name will directly display the corresponding user name, and the unlocking id not associated with the name will display the specific unlocking ID.

When the door lock is connected with the mobile phone Bluetooth, the door opening record will be displayed to the app in real time. Otherwise, the record will be cached in the local door lock, waiting for the next time the door lock is connected with the mobile phone Bluetooth and open the door for supplementary transmission.



Door lock setting

1. Select "setting" in the main interface to enter the door lock setting interface. Set different functions of the door lock according to user requirements.



Restore factory settings

Click the icon in the upper right corner of the main interface. After entering the interface, pull down to find "remove device", and select "unbind and clear data"

1. When the mobile phone APP is in Bluetooth connection status with the door lock, use the remove device setting operation. All local door opening modes of the door lock will be deleted, and the door lock will be restored to the default state when it was just delivered from the factory.

Other users can add the door lock again through APP.

2. When the mobile phone is not Bluetooth connected with the door lock, restore the factory setting of the door lock on the door lock. The door opening mode on the door lock remains unaffected.

Other users can re pair the information with the door lock through the APP, and the original unlocking method of the paired rear door lock will fail.

3. Press and hold the rear panel setting button for 5 seconds to restore the factory setting.

Normally open set / cancel normally open

Normally open setting: Briefly press the rear panel setting button to set the normally open function, and the user can directly press the handle to open the door.

Cancel normally open: Briefly press the setting button on the rear panel to cancel the normally open function.

