

Intelligent Lock Operation Instructions

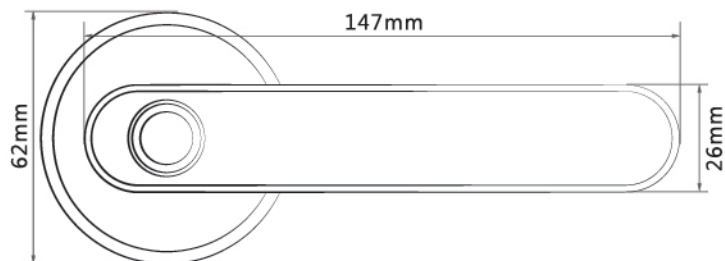
CATALOGUE

1.Points For Attention	03
2. Indicator Status Description	04
3. Door Lock Operation Instructions	05
4. Installation Instructions	07
5.Foundation Accessories	09

Precautions For Using Door Locks

1	The initialization state, the administrator password default is 123456, set a new administrator, the initial administrator password automatically invalid.
2	The number of password bits: more than 6 digits, the number can be combined at will.
3	The first set of fingerprint / password / card default for the administrator
4	Fingerprint capacity: 100 Tassword + Card capacity: 150 groups

Product Size



Indicator Status Description

The indicator light is always green, and the buzzer is long	Verification success
Red light flashing rapidly, buzzer short 3	Verification failure
Green indicator light is always on, the buzzer is a long sound	Match successfully
Red light flash 3 times, buzzer short 3 times	Match failure
Blue light is always on	Enter the registration status
Blue light flashing	Enter administrator verification status
Green Indicator Light Long	Verify success status
Red light flashing	Verify failed status

First Time Registrant Fingerprint

Long press the "#" button for 3 seconds to enter the setting state, the indicator blue breath flashing, enter 123456 + #, verify through, the indicator blue light is always bright, enter the fingerprint 5 times, the buzzer chimes a long time, the indicator green, indicating that the administrator has successfully registered. (The first group defaults to the new administrator)

Registered Administrator Password

Press the "#" key for 3 seconds to enter the setting state, the indicator blue breath flashes, verify the new administrator once, the indicator blue light is always bright, enter the "registration password + #" twice, the buzzer rings long, the indicator light green display, indicating the administrator password registration success.

Registered Administrator Card

Press the "#" key for 3 seconds to enter the setting state, the indicator blue breath flashes, verifies the new administrator once, the indicator blue light is always bright, the card swipes the card to operate once, the buzzer sings long, the indicator light green display, indicates the administrator card registration success.

Registered Ordinary User

Long press the "#" button for 3 seconds to enter the setting state, the indicator blue breath blinks, verify the administrator once, the indicator blue light is always bright, enter the ordinary user registration state, the registration method is the same as the administrator registration method.

Low Voltage Alarm

When the voltage is lower than 4.6V, the red indicator light flashes 5 times quickly, accompanied by the sound of the buzzer, please replace the battery as soon as possible.

Normally Open Mode Setting

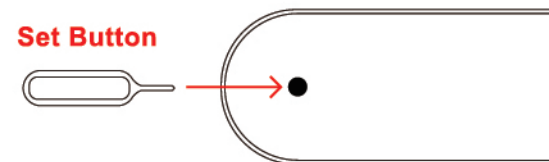
1. Press the set button, the buzzer will beep once and enter the normally open mode.
2. Enter 000 #, indicator breathing flash, enter registered user verification, enter normally open mode

Cancel Normally Open Mode

1. Short press the settings key to turn off the normally open mode
2. The registered user unlocks once and turns off the normally open mode.

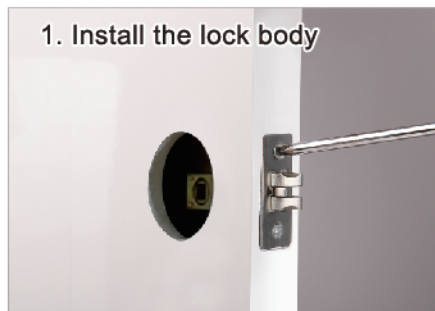
Delete User (Factory Reset)

Press and hold the settings button for 5 seconds until the indicator light is green and the buzzer beeps for 2 seconds, indicating that the factory settings have been restored successfully.



Installation Instructions

1. Install the lock body



Put the lock body into the corresponding slot and fix the upper and lower screws.



Put the power cord on the front handle through the square steel bar.



The square steel passes through the square steel hole of the lock body, secure the handle.

2. Install front handle



Secure the two nut posts to the front handle.



Note: Square steel needs to be placed at the bottom.

3. Install the rear handle



Loosen the screws of the rear cover plate with a hexagon wrench and remove the rear cover plate.



Put one end of the power cord through the center hole of the rear handle.

4. Install the battery



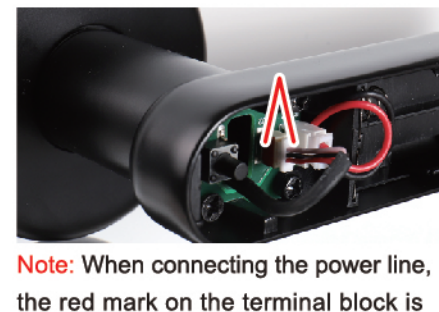
Plug in the power cord and install the battery.



Fasten the rear cover plate and fix the screws of the rear cover plate.



Align the square steel bar, tighten it with long screws, and fix the rear handle.



Note: When connecting the power line, the red mark on the terminal block is inserted in the same direction as the port red mark

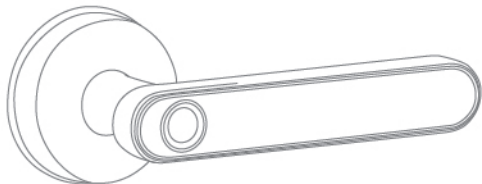
5. Complete and test



After installation, check the door opening.

Foundation Accessories

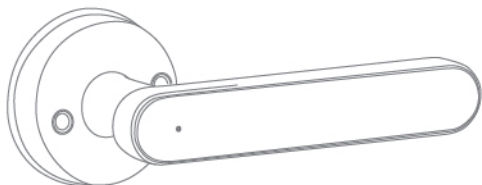
After unpacking the product, check the following accessories.



Front Handle x1



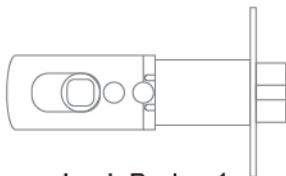
Stud X2



Rear Handle x1



Long Screw X2



Lock Body x1



Lock Screw X2



Key X2



Latch Piece x1



Hexagon Wrench X1



Pin X1



Latch Cover X1



Hollow Square Steel X1